

Tech Topics: Cutting the Cable Cord



Overview

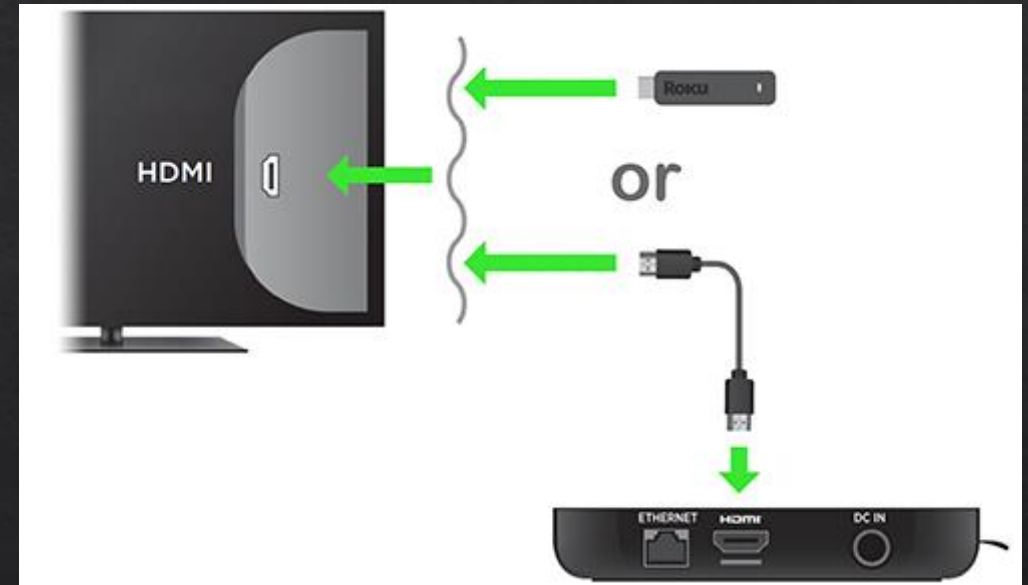
- Things to consider before cutting the cable cord
- What equipment you need
- List of hardware devices
- What type of programming is available
- Comparison of the popular services
- Additional Resources

Things to consider

- Is my internet connection strong enough to support all my devices?
- With several services, will it be cheaper than my cable bill?
- How expensive is an internet only bill?
- Monthly subscriptions rather than yearly contracts
 - Many services have free trial periods
- How to get your favorite shows and channels?
 - <https://thestreamable.com/matchmaker> - live TV
 - <https://reelgood.com/> - on-demand programming

What you need to get started

- Home WiFi connection
 - Internet speed of 5 mbps per device
- Smart TV or Hardware Streaming Device (Roku)
 - May need an HDMI cable to connect streaming device to TV



Hardware Devices

- Smart TVs
 - Built-in connection to streaming services
- HD antenna (\$15-\$50)
 - Access over the air channels without internet



Hardware Devices

- Roku (\$29-\$99)
- Amazon Fire Stick (\$38-\$114)
- Apple TV (\$150-\$180)
- Google Chromecast (\$39-\$69)
- Equipment is a one time fee



Programming

- Live TV streaming services
 - Similar to traditional TV
 - Sling TV, YouTube TV, DirecTV Stream
- On demand streaming services
 - Content is pre-recorded and available to watch at any time
 - Netflix, Hulu, Amazon Prime Video, Disney Plus



Comparison of Live Streaming Services

TOP LIVE TV STREAMING SERVICES COMPARED					
	DirectTV Stream	FuboTV	Hulu Plus Live TV	Sling TV	YouTube TV
Base price	\$70 per month for 65-plus channels	\$65 per month for 100-plus channels	\$65 per month for 70-plus channels	\$35 per month for 30-plus (Orange) or 45-plus (Blue) channels	\$65 per month for 85-plus channels
Free trial	Yes	Yes	Yes	Yes	Yes
ABC, CBS, Fox and NBC channels	Yes, in many markets	Yes, in many markets	Yes, in many markets	Fox and NBC only in select cities	Yes, in many markets
Simultaneous streams per account	20 (in home, 3 outside of it)	3	2 (\$15 option for unlimited)	1 (Orange), 3 (Blue)	3 (\$20 adds unlimited and 4K streams)
Family member/user profiles	No	Yes	Yes	No	Yes
Cloud DVR	Yes (20 hours, unlimited for \$10 a month)	Yes (250 hours, 1,000 hours for \$17 a month)	Yes	Yes (50 hours, 200 hours for \$5 a month)	Yes (unlimited)
Fast-forward through or skip commercials with cloud DVR	No (Yes with \$15 option)	Yes	No (Yes with \$10 option)	Yes	Yes

Source: CNET

Comparison of On Demand Services

	Netflix	Hulu	Amazon Prime Video	Disney Plus
Monthly base price	\$8.99	\$6.99	\$8.99	\$7.99
Free trial	No	Yes	Yes	No
Ads	No	Yes (No ads for \$11.99)	Prime content – No IMDBTV content - Yes	No
Individual profiles	Yes	Yes	Yes	Yes
Subscribers	203 mil	40 mil	150 mil	95 mil

Disney+ Bundle includes Hulu & ESPN+ for \$13.99

Other Services

Peacock: NBC/Universal programming

Discovery+: Discovery, HGTV, Food Network, Animal Planet, History Channel

HBO Max: original content & select movies

ESPN+: live sports & original documentaries

Curiosity Stream: historical, science, technology, nature documentaries

Library Apps



- 5 titles per calendar month
- 72 hour loan period
- Documentaries, Independent Productions, Foreign Films



- 10 titles per calendar month
- 72 hour loan period
- Selection of movies and TV shows

Additional Resources

- Consumer Reports
www.balibrary.org/databases
- Hoopla & Kanopy access
<https://balibrary.org/downloads>
- Questions?
 - Email digitalservices@balibrary.org